

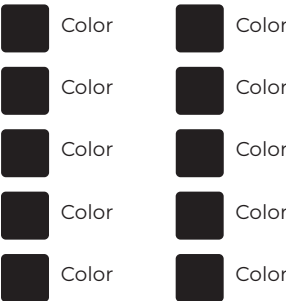
# DESIGN TEMPLATE

Color Block Accent Sleeve Quarter Zip  
(CBQZ101)



**\*\*TEMPLATE IS IN 1/10 SCALE\*\***

## COLOR CALLOUT



Body colors are subject to availability. Colors will not be an exact match. Choose colors from Pantone's Solid Coated book. RGB, CMYK and HEX colors will be converted to the closest Pantone value if color code is not provided. Please avoid 6000C, 9000C, or Neon colors.

## ARTWORK CHECKLIST

- ☐ Vector artwork or high-resolution raster artwork (linked)
- ☐ Package / embed all linked elements, outline / package all fonts
- ☐ List any specific color, sizing and placement requirements

## TEMPLATE KEY

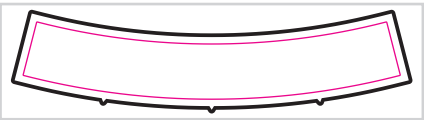
THESE GUIDELINES DO NOT PRINT

- Cut Line** —————  
Artwork outside the cut line won't be included in the garment.
- Sew Line** —————  
Artwork must be inside the sew line to be included in the garment, else it may be cut off.
- Fold Line** - - - - -

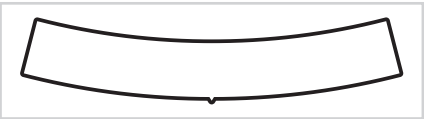
## DISCLAIMER

Mockups are artist renderings for conceptual review and are not a 1:1 representation of your final product. Placement on this template is approximate, with tolerance of +/- 1". Artwork placed across seams will not line up. Template is for reference only, placement of elements and sizing of elements is subject to change and dependant on production needs. If sizing, location, placement or color details are not specified, our production team will match your artwork to the best of their ability. Artwork placement/scale may vary per garment size. THIS IS NOT A PROOF. Proof approval is required prior to production. We are not liable for errors sent in on client artwork. Please check all sizing, spelling, color, placement, and other details before approving your proof.

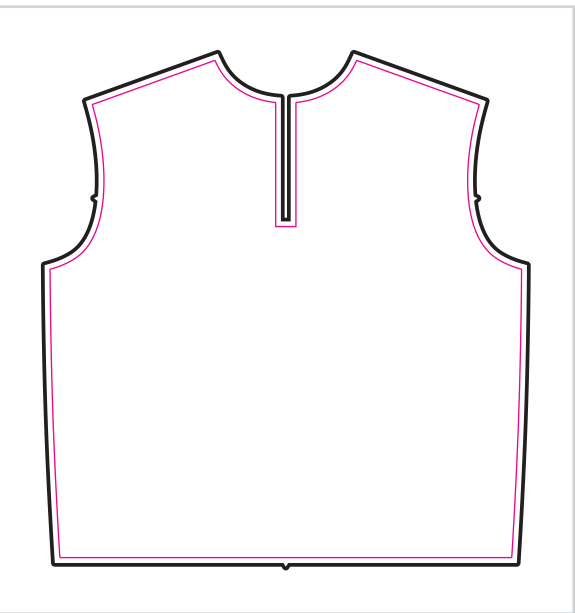
Outer Collar



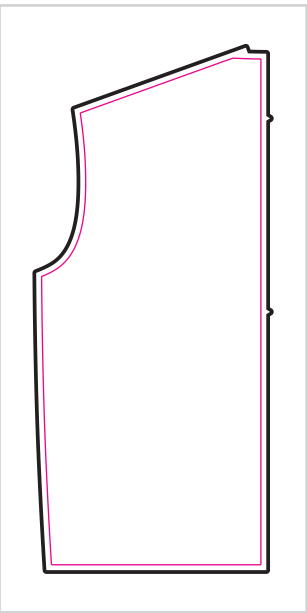
Inner Collar



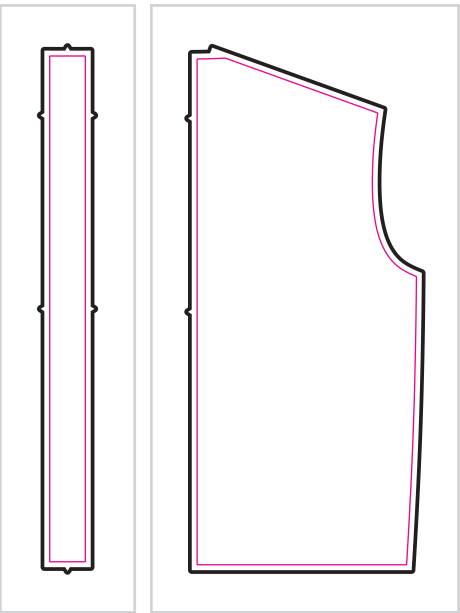
Front Panel #1



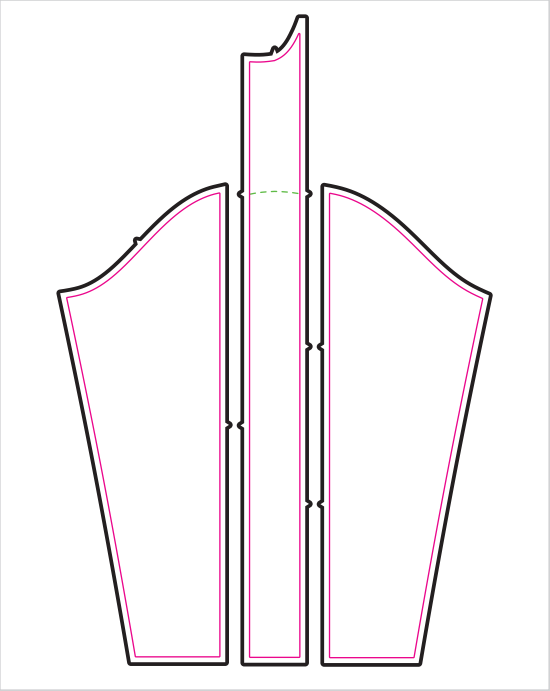
Back Panel #1



Back Panel #2 Back Panel #3



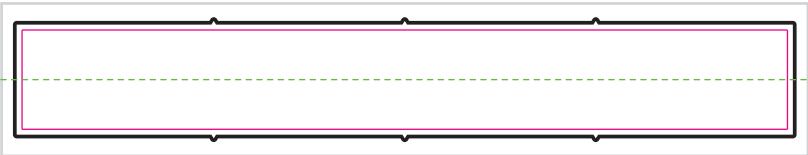
Wearer's Left Sleeve



Wearer's Right Cuff



Waistband



Wearer's Left Cuff

